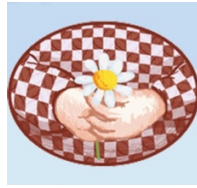


Stone Bay Montessori and Beach School



Hand Washing Policy

We begin to teach children how to wash their hands effectively during their first day at the nursery. Hand washing is regularly enforced on arrival, before and after eating, after playing outside, after using the toilet, after messy activities and after coughing and sneezing.

As we are a Montessori Nursery School our aim is to encourage independence. We will help children to wash their hands, however our main goal is that they will take over this and manage their own health and hygiene once they are able to do so effectively.

Additionally, the sink in the washroom has a step-by-step guide to hand washing posted above the washbasin as well as additional posters - please see examples in our Policy and Procedures folder following this policy.