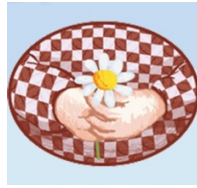


Stone Bay Montessori and Beach School



Smoking / E-cigarette / Vaping Policy

At Stone Bay Montessori and Beach School we are committed to promoting children's health and wellbeing. Smoking has proved to be a health risk and therefore in accordance with legislation, the nursery operates a strict no smoking policy within the nursery and grounds.

The issues involved concern the comfort, health (particularly in relation to the dangers of passive smoking) and safety of all those working, learning, and visiting the school. The Policy applies to all staff, students, parents and visitors and is part of the School's commitment to the health, safety and wellbeing of staff and students.

SMOKING and/or VAPING IS PROHIBITED

- **INSIDE THE BUILDING**
- **NEAR THE FRONT DOOR OF THE SCHOOL OR PLAYGROUND**

If staff leave the premises on their break to smoke, they are to change into a different set of clothes than those that they are working in and ensure that upon their return to work they don't smell of smoke.

We respect that smoking is a personal choice, although as a nursery we must ensure this doesn't effect the children within our care.