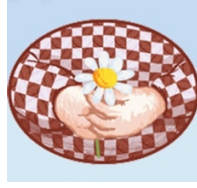


# Stone Bay Montessori and Beach School



## Lunch Box Policy

### **Statement of Intent**

The aim of this policy is to ensure that all food and drinks brought in from home contribute to a child's healthy diet / lifestyle.

### **The Nurseries Responsibility**

- Lunch time will be a sociable experience where children eat with adults present, closely monitoring them.
- Adults will be seated with the children and then children will always remain within both line of sight and hearing.
- We will provide a dining environment that is appropriate for each child's age and development as well as inviting and hygienic
- We will ensure good behaviour at the table and aid the children in learning appropriate table manners and consideration for others
- We will always provide fresh drinking water for the children

### **The nursery is not responsible for the following**

- Refrigeration, so we request that food from home is in insulated bags with freezer blocks
- The nursery is not allowed to re heat food therefore all food provided in a lunch box must be ready for consumption without the need for heating

**It is the parents' responsibility to ensure they are providing a balanced meal within a packed lunch. They must provide a healthy lunch with the option of one 'treat' if they wish.**

### **Lunch Boxes must NOT include the following:**

- Grapes (due to high choking risk)
- Anything containing nuts as we are a nut free setting
- Fizzy drinks, drinks with added sugar or sweeteners